



Hard Chess Puzzle # 0099

By

G Bud Games
<https://gbud.in>

January 8, 2022

Contents

Hard Chess puzzle # 0099 - Mate in 4 moves	4
Hard chess puzzle 0099	4
Solution to hard chess puzzle 0099	5
Solution 1	5
Solution 2	10
Right moves for the solution to the hard chess puzzle 0099	14
Explanation for the moves	14
Categories of hard chess puzzle 0099	15
hard chess puzzle 0099 chart	16
How to view the solution to hard chess puzzle 0099	18
How to get help for moves in the hard chess puzzle 0099	19
Play chess for free	20

List of Figures

1	Solve this hard chess puzzle 0099. Mate in 4 moves @ https://gbud.in/gv23f93	4
2	Solve this hard chess puzzle online with solution @ https://gbud.in/gv23f93	4
3	Initial board position of hard chess puzzle 0099	5
4	g5	6
5	Nfg6+	6
6	Qxg6	7
7	Nxc6+	7
8	Kg8	8
9	Bd5+	8
10	Re6	9
11	Bxe6#	9
12	Initial board position of hard chess puzzle 0099	10
13	g5	10
14	Nhg6+	11
15	Qxg6	11
16	Nxc6+	12
17	Kg8	12
18	Bd5+	13
19	Re6	13
20	Bxe6#	14
21	hard chess puzzle 99 chart 1	16

22	hard chess puzzle 99 chart 2	17
23	hard chess puzzle 99 chart 3	17
24	hard chess puzzle 99 chart 4	18
25	Click the solution button to view solutions @ https://gbud.in/gv23f93	18
26	Click the help button to get help on next move @ https://gbud.in/gv23f93	19
27	Solve more hard puzzles @ https://gbud.in/chshdpz	19
28	Solve other puzzles @ https://gbud.in/chsgppz	19
29	Play chess online for free. Solve puzzles and play with friends	20
30	Solve this puzzle online by scanning this QR code or go to the link below	21

Hard Chess puzzle # 0099 - Mate in 4 moves

Solve this hard chess puzzle and improve your chess games through improvement of your chess strategies and chess tactics. This hard puzzle is a subset of [kids games](#).

Puzzle No : 0099

Difficulty level : hard

Description : Mate in 4 moves

Next Move : White

Player level : Advanced

Short URL for puzzle : <https://gbud.in/gv23f93>

Hard chess puzzle 0099

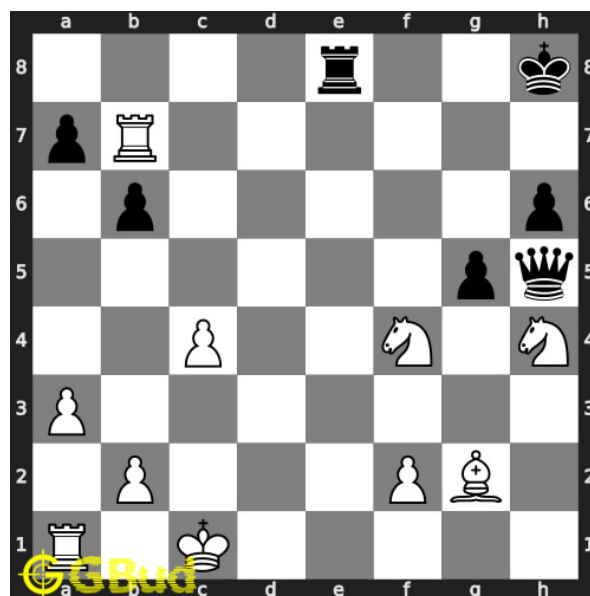


Figure 1: Solve this hard chess puzzle 0099. Mate in 4 moves @ <https://gbud.in/gv23f93>



Figure 2: Solve this hard chess puzzle online with solution @ <https://gbud.in/gv23f93>

Dont forget to check out [chess puzzles](#), [easy chess puzzles](#), [medium chess puzzles](#), [hard chess puzzles](#) and [chess puzzles collections](#) .

Solution to hard chess puzzle 0099

At this puzzle, next [move](#) is by [White](#). The objective of the puzzle is to mate in 4 moves.

See the interactive solution at the [puzzle page](#)

Solution 1

Initial board position This is the initial board position of hard chess puzzle 0099.

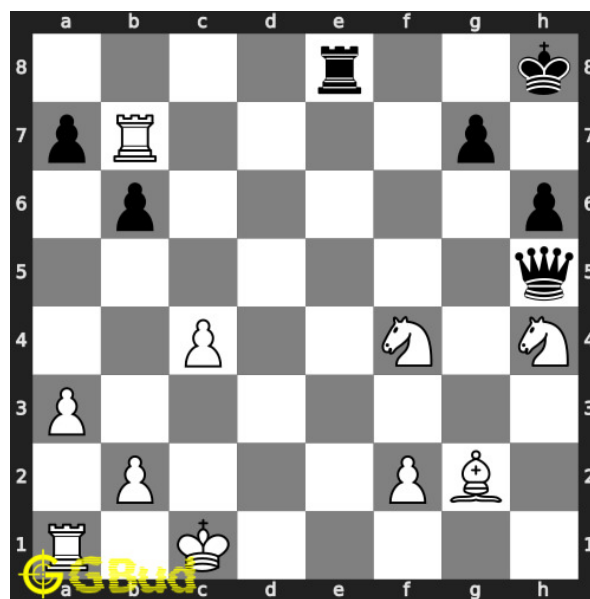


Figure 3: Initial board position of hard chess puzzle 0099

Move 1 Move by black

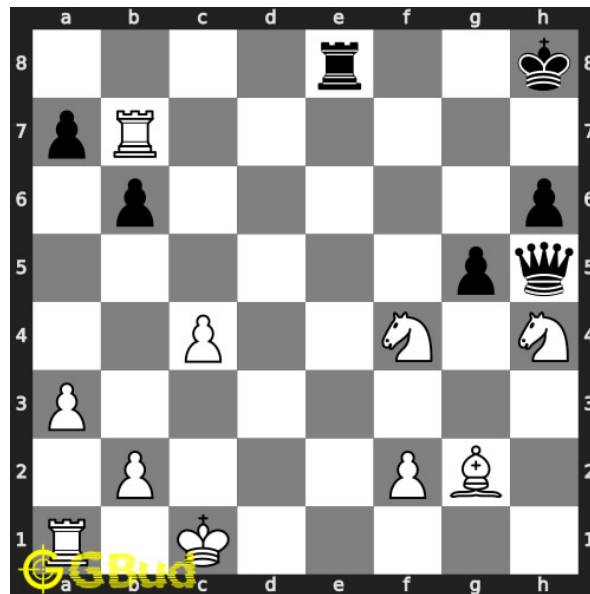


Figure 4: g5

opponent made mistake. they try to [fork](#) your [knights](#) so that they can gain one of them. but this [move](#) also opened the seventh [rank](#) for your [rook](#)

Move 2 Move by white

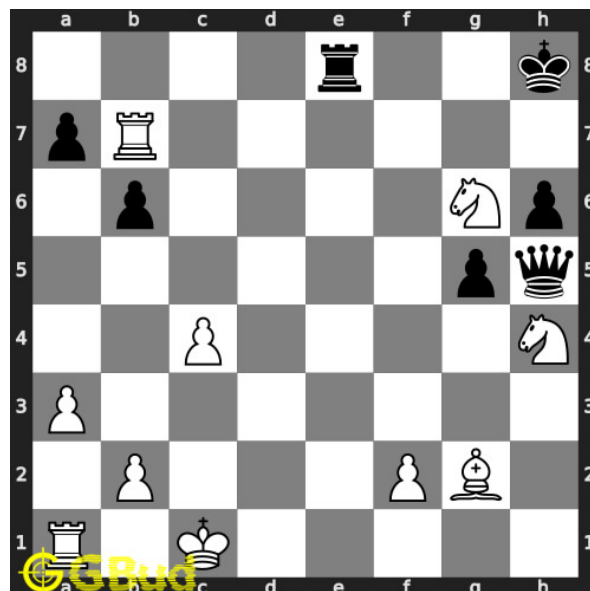


Figure 5: Nfg6+

your [knight](#) from f [file](#) [moves](#) to g6 and gives [check](#).

Move 3 Move by black

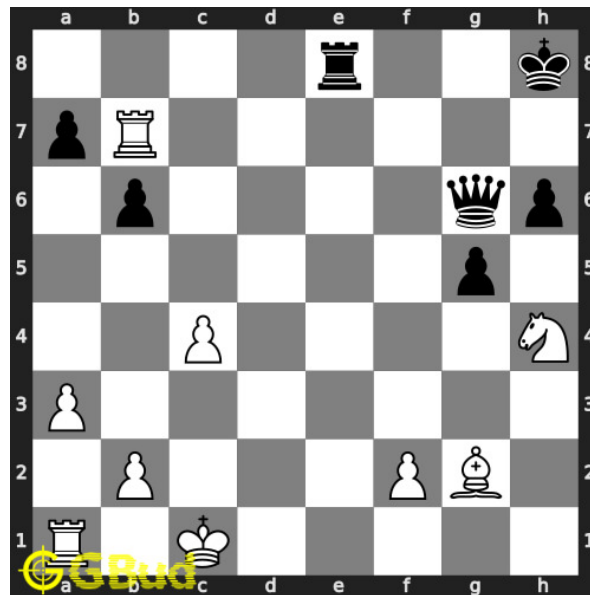


Figure 6: Qxg6

opponent's [queen sacrifices](#) itself to escape from the [check](#) threat. if the [king moves](#) to g8, the game will end in two [moves](#)

Move 4 Move by white

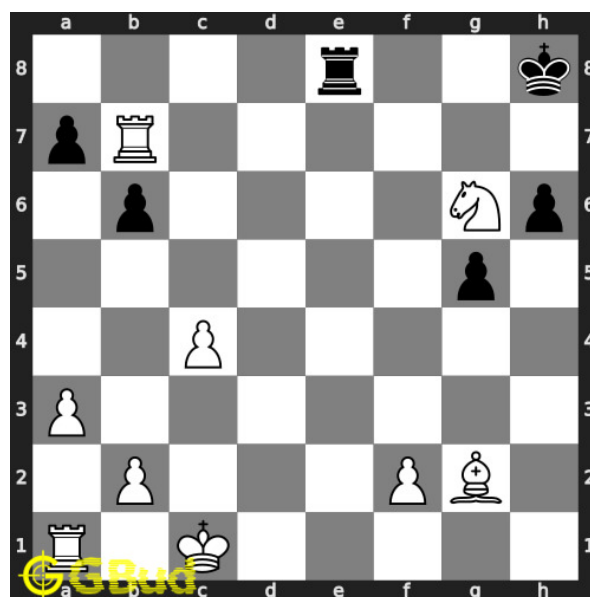


Figure 7: Nxg6+

your [knight captures](#) opponent's [queen](#) and gives next [check](#)

Move 5 Move by black

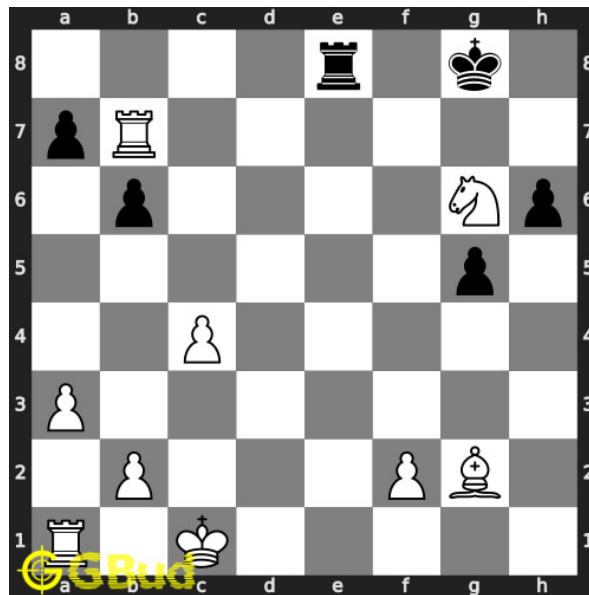


Figure 8: Kg8

opponent's **king moves** to g8 to escape from the **check** threat. it can't come to seventh **rank** due to the attack from your **rook**.

Move 6 Move by white

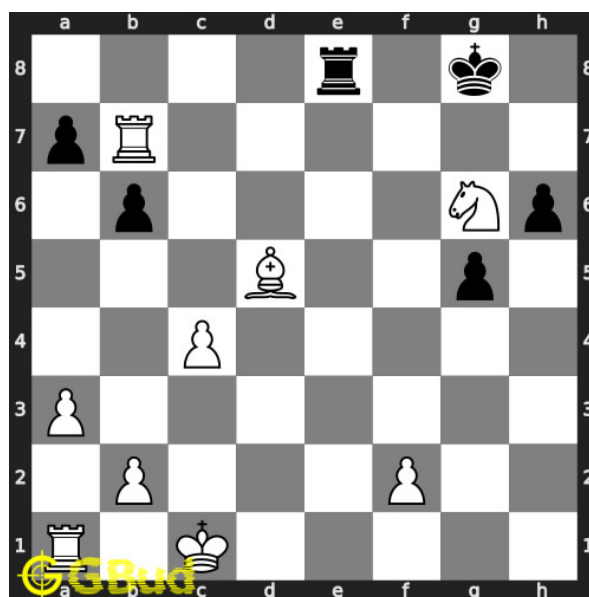


Figure 9: Bd5+

your **bishop moves** to d5 and gives **check** to opponent.

Move 7 Move by black

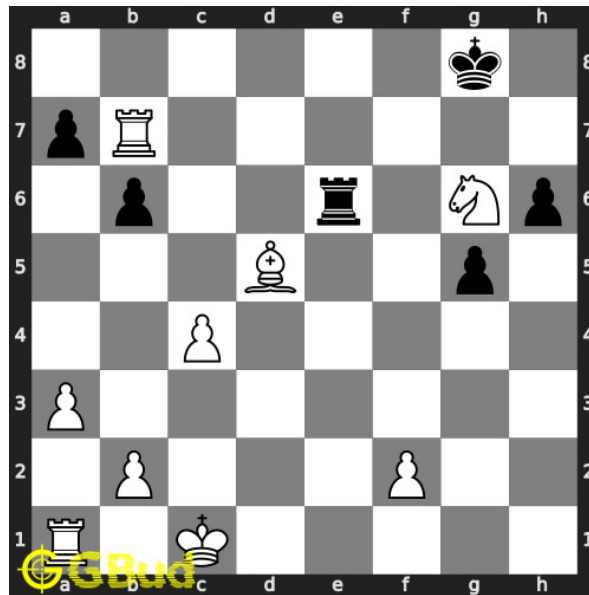


Figure 10: Re6

opponent's **rook moves** to e6 and blocks the **check** threat.

Move 8 Move by white

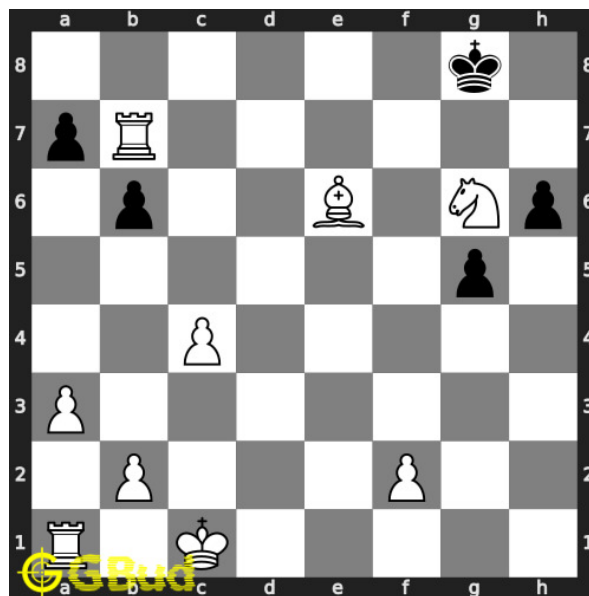


Figure 11: Bxe6#

your **bishop captures** opponent's **rook** and **checkmate**. opponent's **king** can't **move** due to the attack from your **rook** and **knight**.. this is how you can **mate** in 4 **moves**.

Solution 2

Initial board position This is the initial board position of hard chess puzzle 0099.

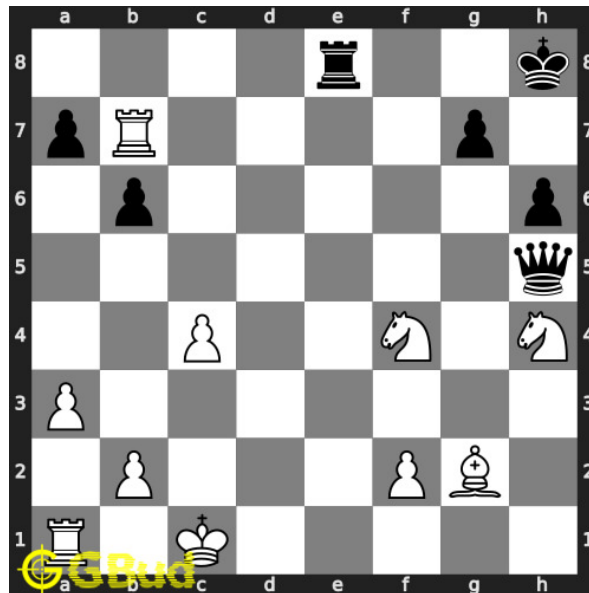


Figure 12: Initial board position of hard chess puzzle 0099

Move 1 Move by black

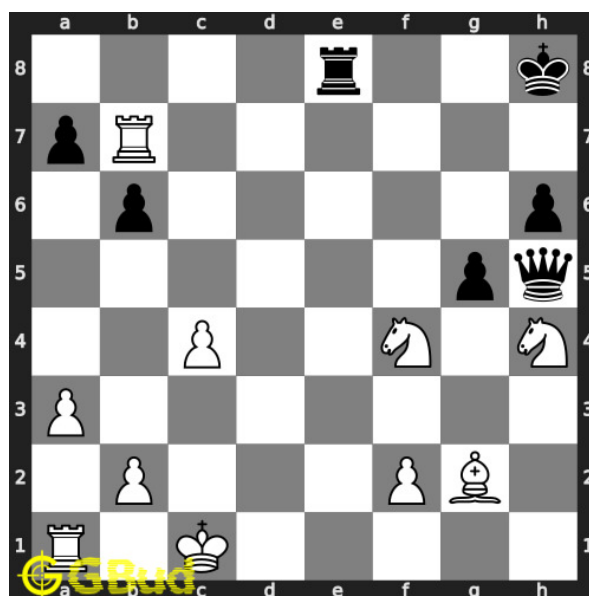


Figure 13: g5

opponent made mistake. they try to **fork** your **knights** so that they can gain one of them. but this **move** also opened the seventh **rank** for your

rook

Move 2 Move by white

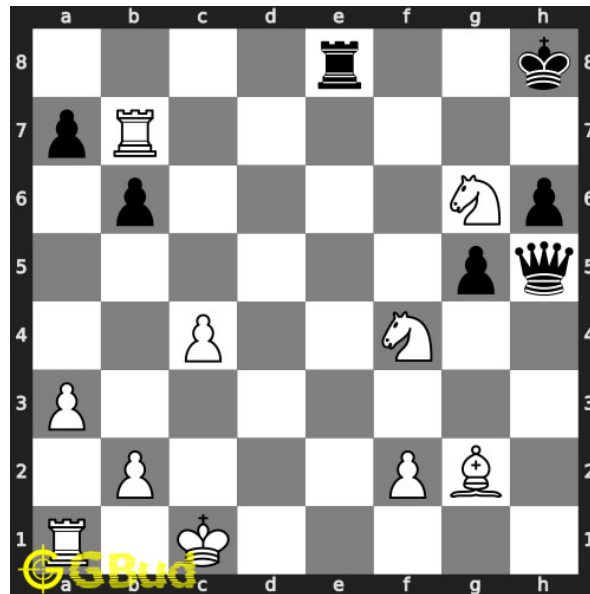


Figure 14: Nhg6+

your **knight** from h **file moves** to g6 and gives **check**.

Move 3 Move by black

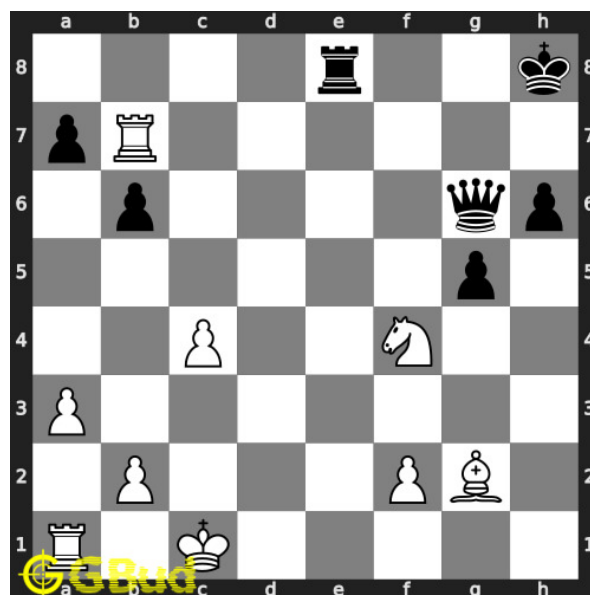


Figure 15: Qxg6

opponent's **queen** sacrifices itself to escape from the **check** threat. if the **king** moves to g8, the game will end in two **moves**

Move 4 Move by white

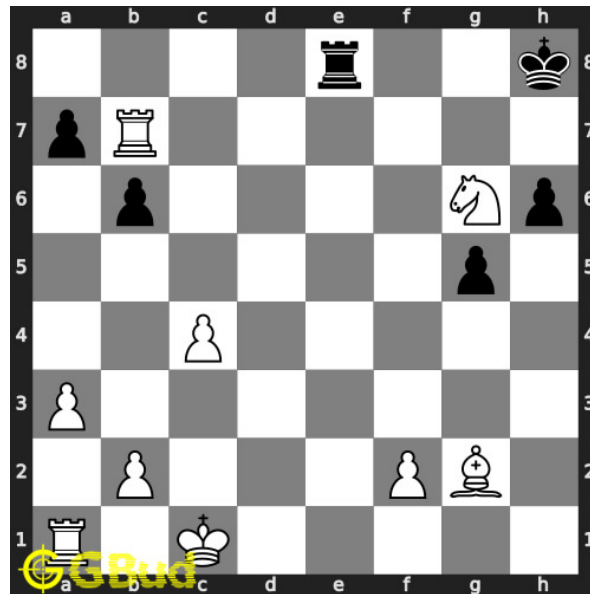


Figure 16: Nxe6+

your **knight** captures opponent's **queen** and gives next **check**

Move 5 Move by black

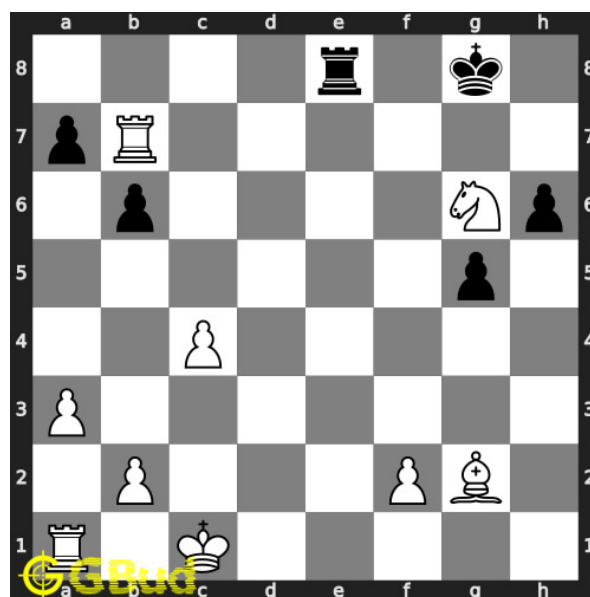


Figure 17: Kg8

opponent's **king** moves to g8 to escape from the **check** threat. it can't come to seventh **rank** due to the attack from your **rook**.

Move 6 Move by white

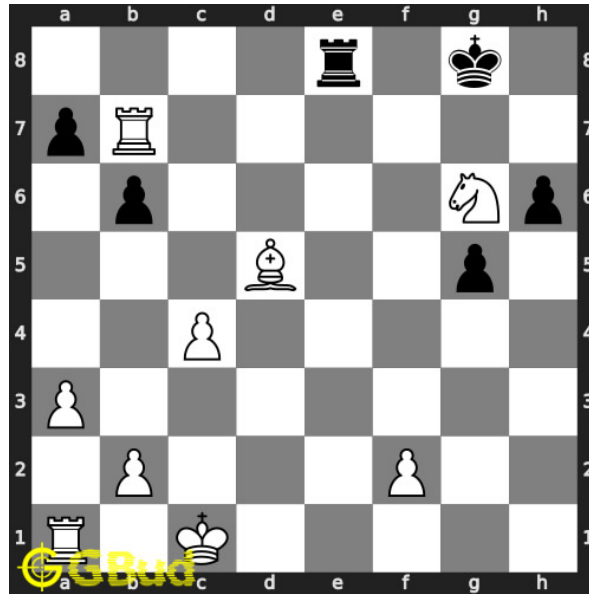


Figure 18: Bd5+

your **bishop** moves to d5 and gives **check** to opponent.

Move 7 Move by black

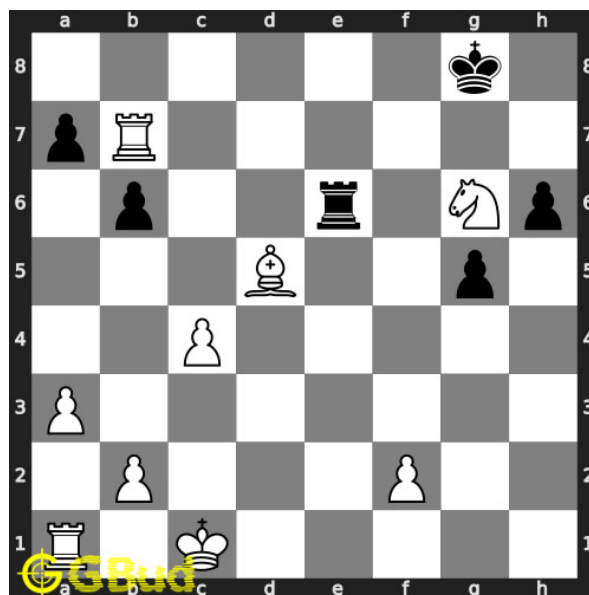


Figure 19: Re6

opponent's **rook moves** to e6 and blocks the **check** threat.

Move 8 Move by white

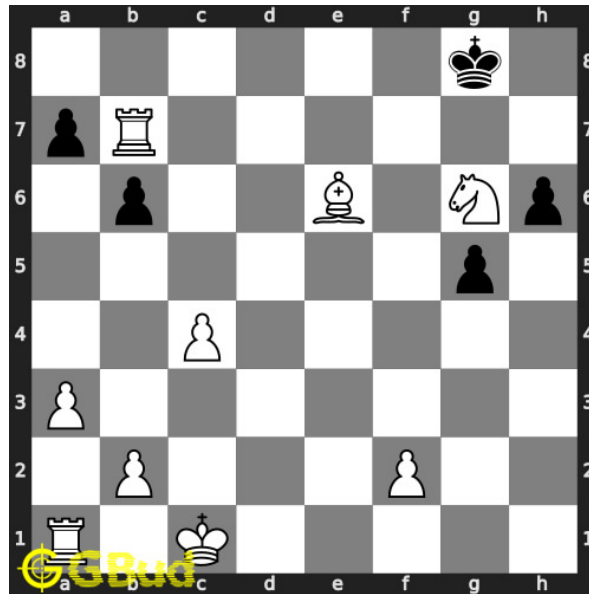


Figure 20: Bxe6#

your **bishop captures** opponent's **rook** and **checkmate**. opponent's **king** can't **move** due to the attack from your **rook** and **knight**.. this is how you can **mate** in 4 **moves**.

Right moves for the solution to the hard chess puzzle 0099

Based on the objective of the puzzle, you have to make the right moves. Following are the right moves

1. Nfg6+, Nxg6+, Bd5+, Bxe6#
2. Nhg6+, Nxg6+, Bd5+, Bxe6#

Explanation for the moves

1. g5 - Opponent made mistake. They try to fork your knights so that they can gain one of them. But this move also opened the seventh rank for your rook
2. Nfg6+ - Your knight from f file moves to g6 and gives check.
3. Nhg6+ - Your knight from h file moves to g6 and gives check.
4. Qxg6 - Opponent's queen sacrifices itself to escape from the check threat. If the king moves to g8, the game will end in two moves

5. Nxg6+ - Your knight captures opponent's queen and gives next check
6. Kg8 - Opponent's king moves to g8 to escape from the check threat. It can't come to seventh rank due to the attack from your rook.
7. Bd5+ - Your bishop moves to d5 and gives check to opponent.
8. Re6 - opponent's rook moves to e6 and blocks the check threat.
9. Bxe6# - Your bishop captures opponent's rook and checkmate. Opponent's king can't move due to the attack from your rook and knight.. This is how you can mate in 4 moves.
10. For right move - You moved your pieces effectively and won the game. Good work
11. For wrong move - You could have won after giving check from your knights. Try again

Categories of hard chess puzzle 0099

This hard chess puzzle falls in these categories.

1. [Hard chess puzzles](#)
2. [Sacrifice puzzles in chess](#)
3. [Endgame puzzles in chess](#)
4. [Strategy puzzles in chess](#)
5. [Mate in 4 puzzles in chess](#)
6. [Knight puzzles in chess](#)
7. [Bishop puzzles in chess](#)

hard chess puzzle 0099 chart



Figure 21: hard chess puzzle 99 chart 1



Figure 22: hard chess puzzle 99 chart 2



Figure 23: hard chess puzzle 99 chart 3

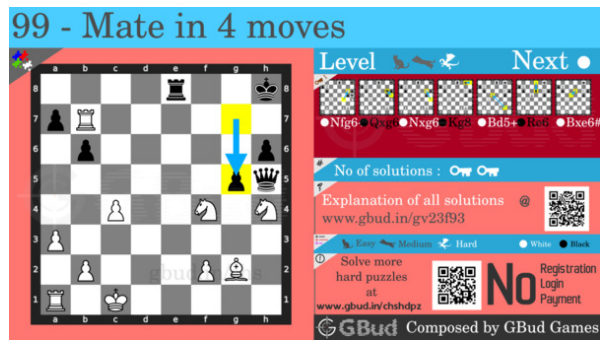


Figure 24: hard chess puzzle 99 chart 4

How to view the solution to hard chess puzzle 0099

To view the [solution to this puzzle](#), follow the steps given below

1. Go to the [puzzle page](#)
2. Click the solution button (Key as shown [below](#)) to view the solution



Figure 25: Click the solution button to view solutions @ <https://gbud.in/gv23f93>

How to get help for moves in the hard chess puzzle 0099

To get help or the possible next moves in the puzzle, , follow the steps given below

1. Go to the [puzzle page](#)
2. Click the help button (exclamation mark as shown [below](#)) to get help or suggestion on next possible [move](#)



Figure 26: Click the help button to get help on next move @ <https://gbud.in/gv23f93>



Figure 27: Solve more hard puzzles @ <https://gbud.in/chshdpz>



Figure 28: Solve other puzzles @ <https://gbud.in/chsgppz>

Play chess for free

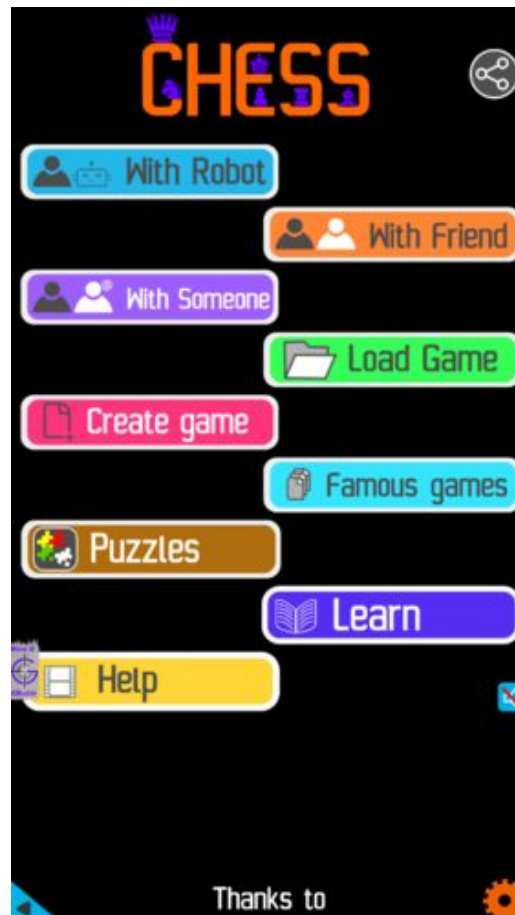


Figure 29: Play chess online for free. Solve puzzles and play with friends

Play chess for free at <https://gbud.in/chs>

We present you a platform to play chess online with friends for free. No need to install any app. You can play chess for free without registration or login.

Simple. You can do several chess related activities.

1. solve chess puzzles
2. learn about chess
3. play chess with computer
4. play chess with friend
5. create your own chess games

6. [fen viewer](#)
7. [fen editor](#)
8. [fen generator](#)
9. [pgn viewer](#)
10. [chess board editor](#)
11. [view famous chess games.](#)



Figure 30: Solve this puzzle online by scanning this QR code or go to the link below

<https://gbud.in/gv23f93>

Read the latest article on Hard Chess puzzle # 0099 - Mate in 4 moves by scanning this QR code or click the link

Previous article : « [Hard Chess puzzle # 0098 - Mate in 3 moves](#)

Next article : [Hard chess puzzles](#) »

[Back to top](#)

[Contact Us](#)